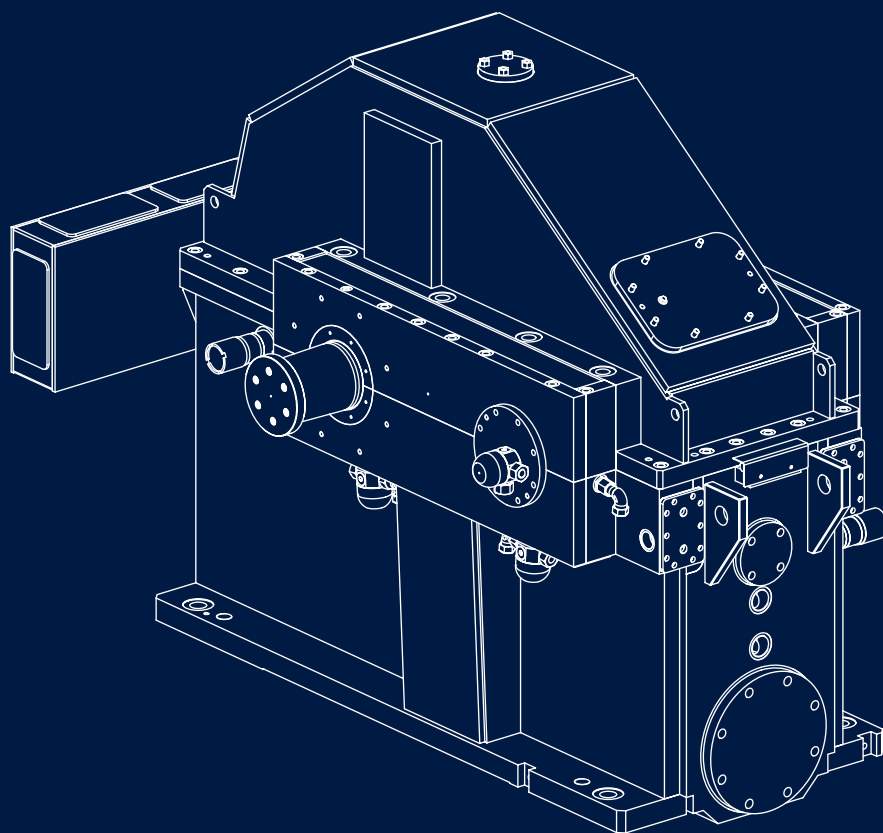




Innovative Power Transmission

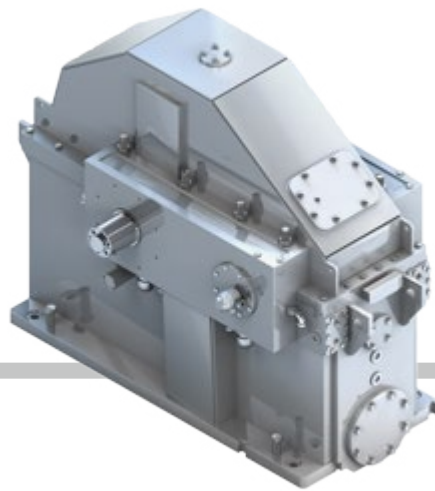


RENK High Speed Gears
Parallel shaft and coaxial concepts

High speed gears...

... parallel shaft concepts

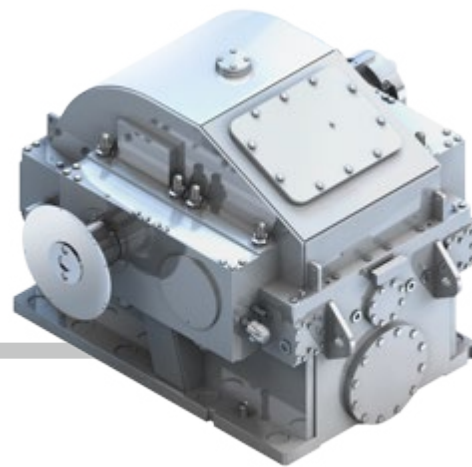
Pre-engineered high speed gear type TA..I



| | |
|--------|------------------|
| Power: | up to 20 MW |
| Speed: | up to 14.000 rpm |
| Ratio: | 4-9,5 |

- Standardized API concept
- Customer gearbox pre-selection in early project stage
- 3D data design and interfaces available in project phase
- Low noise emission: 82 dB(A) for 90% of applications
- Oil drain connections (lateral or bottom)
- Delivery time 5-6 month EXW
- Important train contribution to standardization
- No wiring on upper gear case

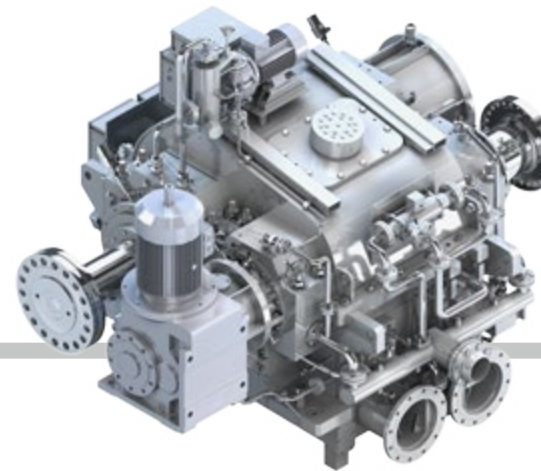
Power gear type TA..XI



| | |
|--------|------------------|
| Power: | up to 140 MW |
| Speed: | up to 14.000 rpm |
| Ratio: | up to 11 |

- Customized API execution for O&G market
- Short shaft end overhang
- Sophisticated bearing selection
- Lowest shaft vibrations
- Low noise emission (insulation)
- No wiring on upper gear case
- Any monitoring option available
- Vast experience list
- Recognized by all major engineering companies

High efficiency load gear type etaX®



| | |
|--------|------------------|
| Power: | up to 170 MW |
| Speed: | up to 20.000 rpm |
| Ratio: | up to 1,5-11 |

- Efficiency increase up to 1%
- CO₂ saving
- Increased reliability
- Increased oil lifetime
- Shaft train availability not influenced
- 2 years pay back time
- No change of oil system
- Vacutech® vacuum technology
- Isopress® bearing technology

... coaxial concepts

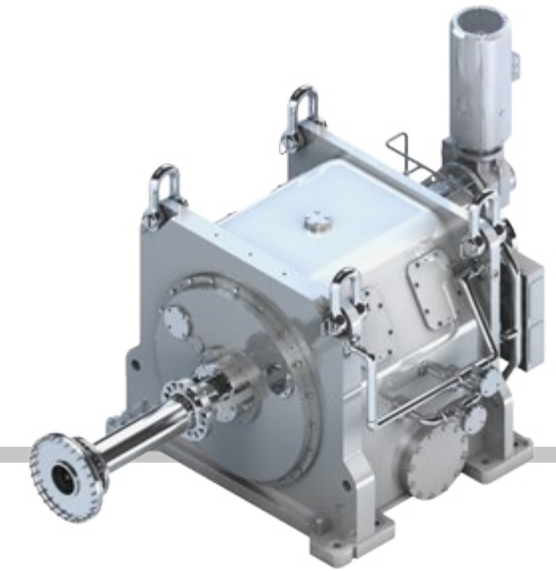
Planetary turbine gear type PTG



| | |
|--------|------------------|
| Power: | up to 3 MW |
| Speed: | up to 35.000 rpm |
| Ratio: | 8-22 |

- Coaxial concept – no offset
- Integrated HSS coupling possible
- Most compact design
- Low weight
- Reduction of pitch line and journal velocity compared to parallel shaft gears
- Thermal growth compensation

Torque split gear type TPV



| | |
|--------|------------------|
| Power: | up to 300 MW |
| Speed: | up to 25.000 rpm |
| Ratio: | up to 1,5-8 |

- Coaxial concept – no offset
- Integrated HSS & LSS coupling
- Small rotor components
- Low masses
- Reduction of pitch line and journal velocity compared to parallel shaft gears
- Thermal growth compensation
- Vacutech® option for efficiency boost



RENK Aktiengesellschaft

Augsburg Plant

Gögginger Str. 73

86159 Augsburg, Germany

Phone: +49 821 5700-0

Fax: +49 821 5700-460

Email: info.augsburg@renk.biz

www.renk.eu

A company of the MAN Group